

UR 22 mkII

USB



EN

 **steinberg**

.....	2
.....	3
.....	3
.....	5
.....	7
UR22mkII	10
.....	10
.....	12
/	12
UR22mkII	15
MIDI	16
.....	19
-	19

USB
 Steinberg UR22mkII
 200 MR816CSX
 MR816X Steinberg
 , 2011 UR824
 UR28M, 2013 — UR22, 2014 UR44 UR12,
 2015 UR242.
 UR22mkII —
 UR22,
 mkII , UR22mkII
 UR22.
 iOS
 (loopback).
 iOS,
 UR22
 UR
 : Windows,
 Mac iOS.
 USB

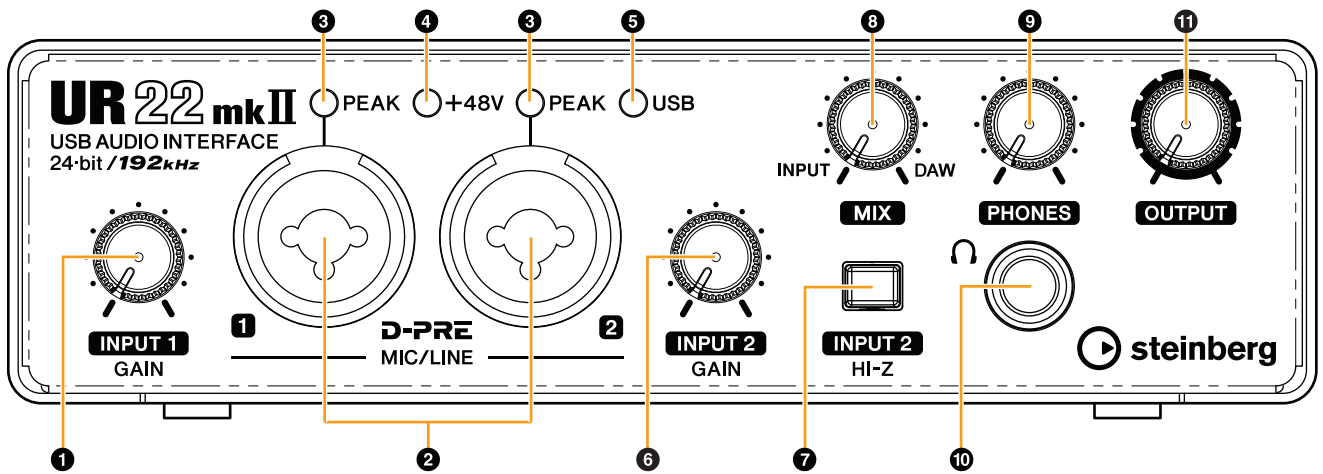
loopback. UR22mkII

UR22mkII

D-Pre

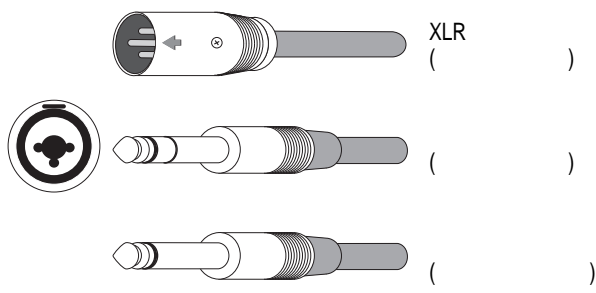
UR22mkII

Steinberg



- 1 [INPUT 1 GAIN]
- 2 [MIC/LINE 1/2]
- 3 [PEAK]
- 4 [+48V]
- 5 USB
- 6 [INPUT 2 GAIN]
- 7 [INPUT 2 HI-Z]
- 8 [INPUT 2 GAIN]
- 9 [PEAK]
- 10 [DAW]
- 11 [OUTPUT]

*1



- 3 [PEAK]
- 4 [+48V]
- 5 [MIC/LINE 1]
- 6 [MIC/LINE 2]
- 7 [INPUT 2 HI-Z]
- 8 [INPUT 2 GAIN]
- 9 [+48V]
- 10 [DAW]
- 11 [OUTPUT]

8

[MIX]

[MIC/LINE 1/2],
(DAW).

[MIC/LINE 1/2]

Mix

[MIX]

[DAW],

[INPUT]

[DAW],

9

[PHONES]

[PHONES].

[OUTPUT].

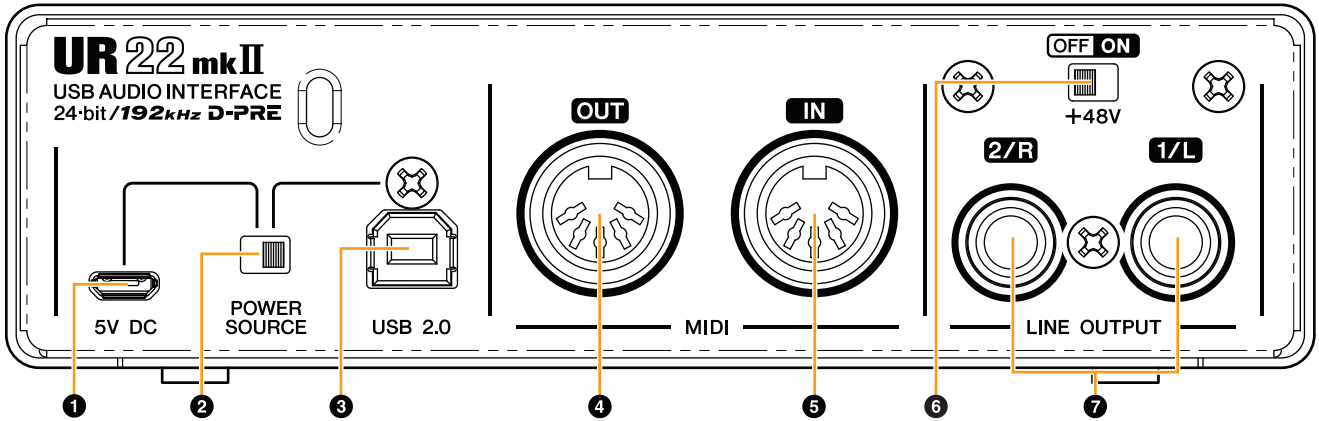
10

[PHONES]

11

[OUTPUT]

[LINE OUTPUT].



- 1 [5V DC] USB
- 2 [POWER SOURCE] iPad
- 3 [USB2.0] iPad
- 4 [MIDI OUT] MIDI
- 5 [MIDI IN] MIDI
- 6 [LINE OUTPUT 2/R]
- 7 [LINE OUTPUT 1/L]

6 [+48V]

[MIC/LINE 1/2], XLR ,

-
-
- [MIC/LINE 1/2],

7 [LINE OUTPUT 2/R 1/L]

.) jack phono (

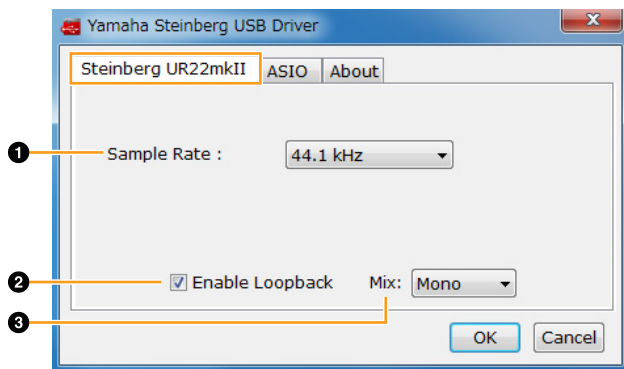
Yamaha Steinberg USB Driver - UR22mkII
 (Control Panel)
 Windows Mac.
 iPad USB

Windows

- [Control Panel] [Windows] [Yamaha Steinberg USB Driver].
- Cubase [Devices] [Device Setup...] [Yamaha Steinberg USB ASIO] [Control Panel]

Steinberg UR22mkII

loopback.

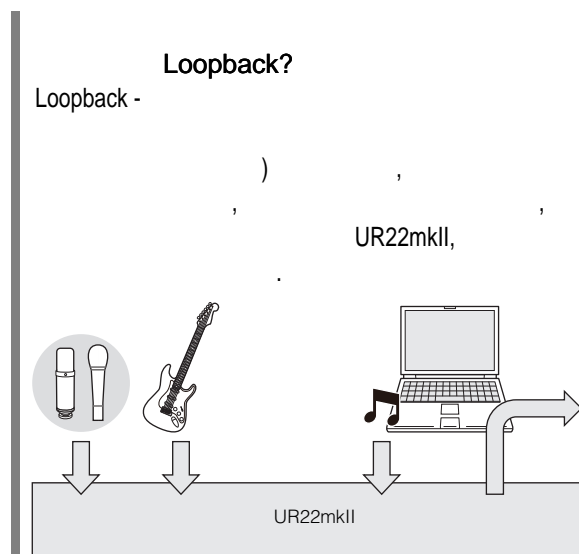


1 Sample Rate

: 44,1 , 48 , 88,2 , 96 , 176,4 , 192

2 Enable Loopback

loopback.



loopback

(DAW).

loopback

UR22mkII

UR22mkII

3 Mix

Enable Loopback,

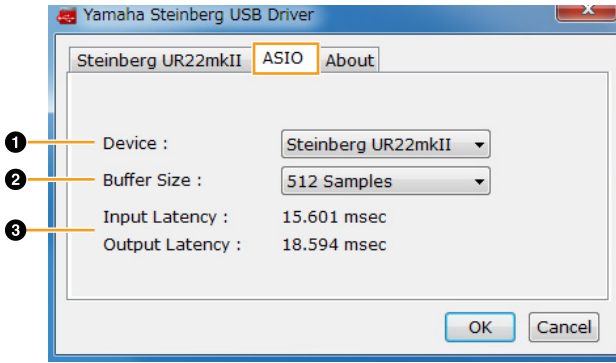
: Mono, Stereo

Mono: [MIC/LINE 1/2]

Stereo: [MIC/LINE 1/2]
 [MIC/LINE 1]
 [MIC/LINE 2]

ASIO

ASIO



1 Device

ASIO (Yamaha Steinberg USB Driver).

2 Buffer Size

ASIO

44.1	/48	64	- 2048
88,2	/96	128	- 4096
176,4	/192	256	- 8192

3 Input Latency/output Latency

About

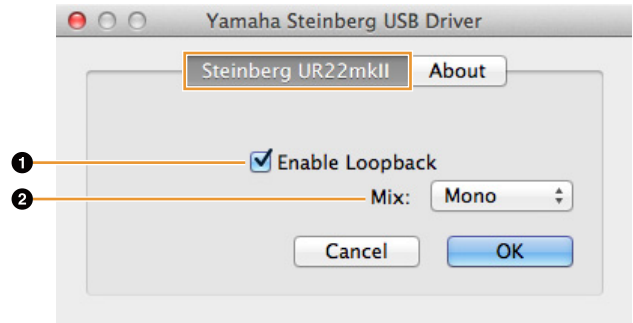


Mac

- [System Preferences] [Yamaha Steinberg USB].
- Cubase [Devices] [Device Setup...] [Steinberg UR22mkI] [Control Panel] [Open Config App]

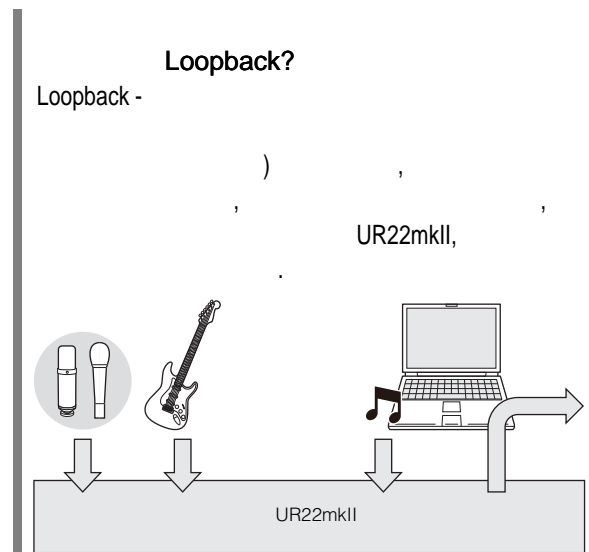
Steinberg UR22mkII

loopback.



1 Enable Loopback

loopback.



loopback (DAW). UR22mkII

3 Mix

Enable Loopback,

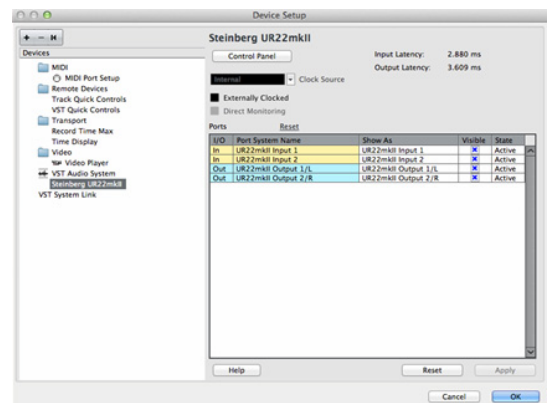
: Mono, Stereo
 Mono: [MIC/LINE 1/2]

Stereo: [MIC/LINE 1/2]
 [MIC/LINE 1]
 [MIC/LINE 2]

About

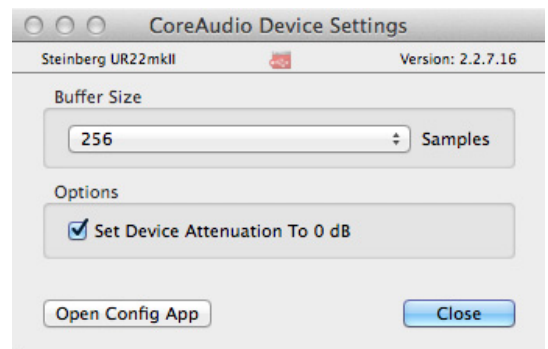
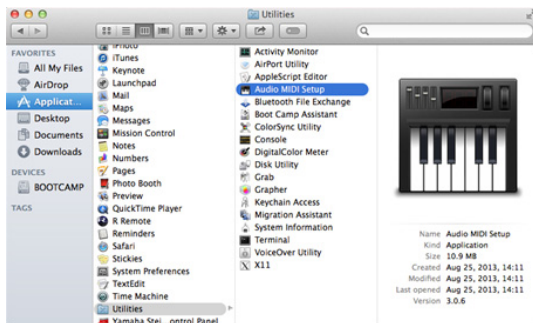


1. Cubase [Devices]
 [Device Setup...]
2. [Steinberg UR22mkII]
 [Control Panel]

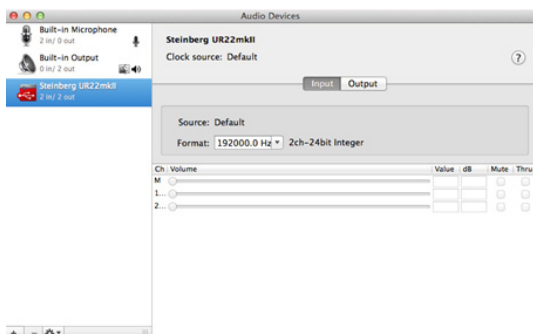


[Audio MIDI Setup].

1. [Applications] - [Utilities] -
 [Audio MIDI Setup].



2. [Format].



UR22mkII

UR22mkII.

1.

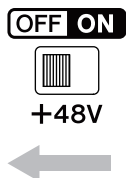
[OUTPUT]

[PHONES]



2.

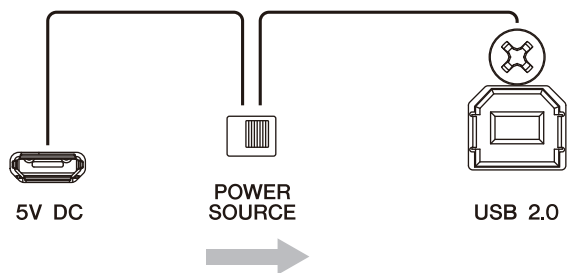
[+48V] [INPUT 2 HI-Z]
" (off).



[INPUT 2 HI-Z] [+48V]

3.

[POWER SOURCE],
[USB2.0].



4.

USB

- (Windows) Yamaha Steinberg USB Driver. USB
- (Mac OS) Yamaha Steinberg USB Driver. USB

5.

[MIC/LINE 1].

6.

[MIC/LINE 2].

7.

[INPUT 2 HI-Z]

" (on)



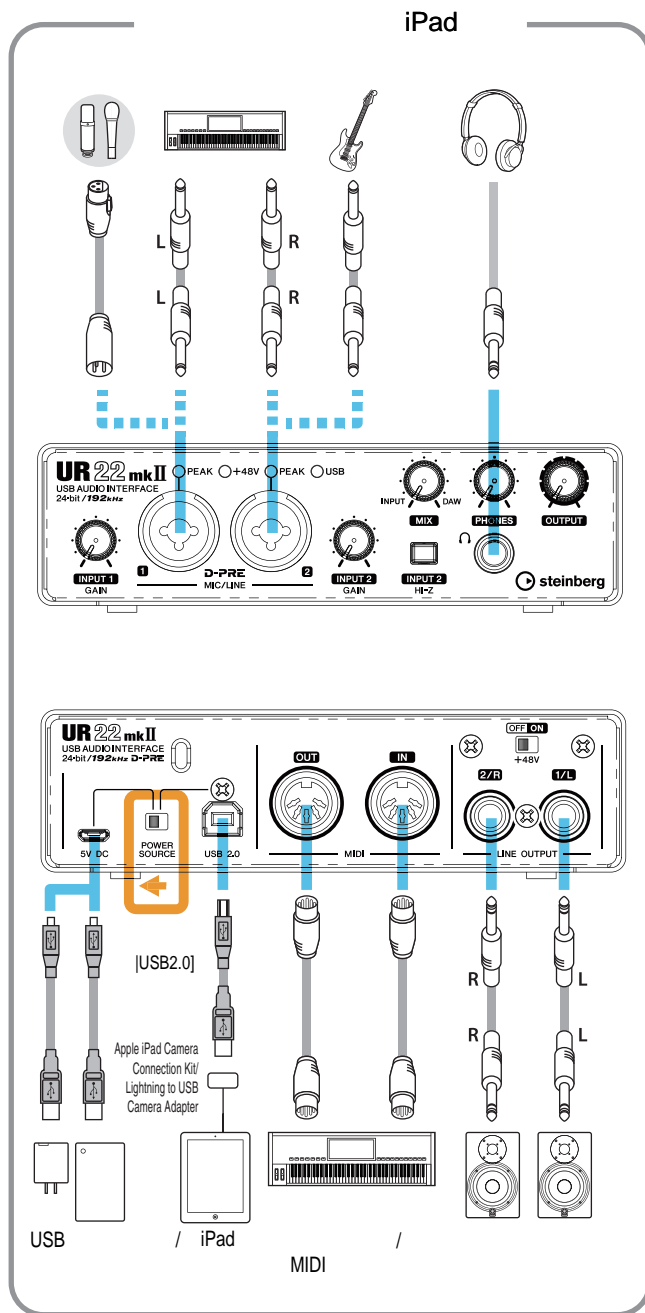
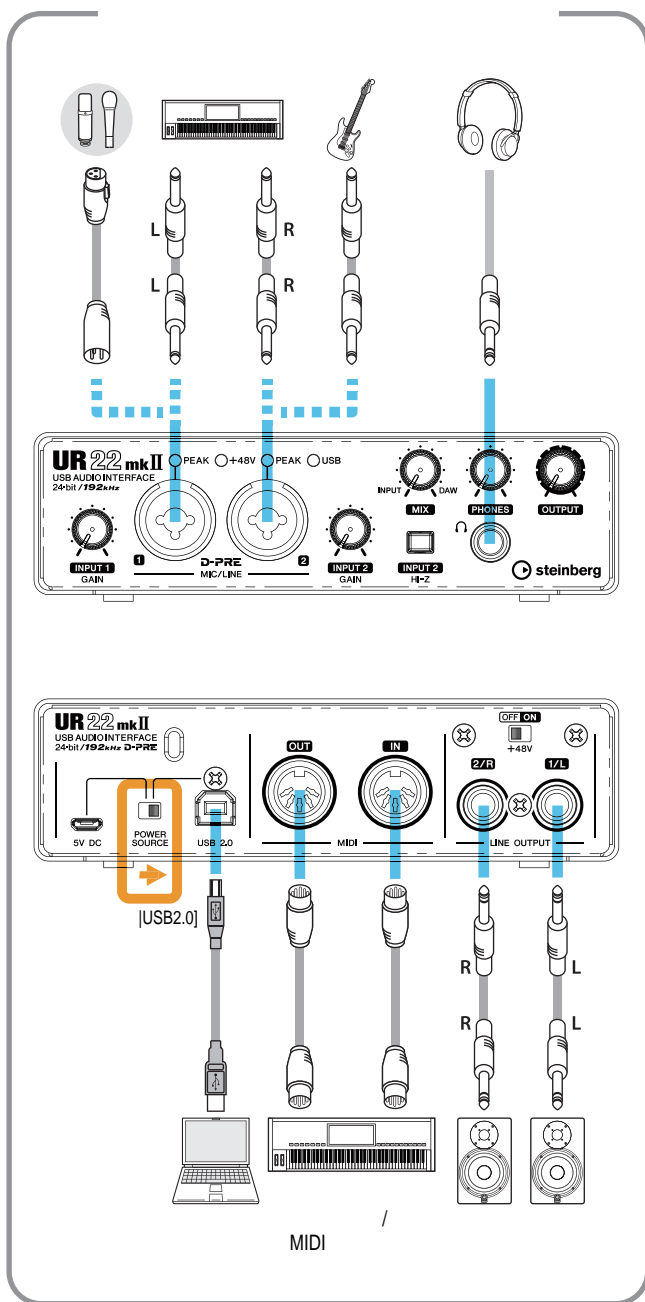
INPUT 2
HI-Z

8.

[+48V].



iPad,



- UR22mkII iPad Apple iPad Camera Connection Kit
- UR22mkII iPad Lightning - USB Camera Adapter
- UR22mkII iPad loopback
- iOS Steinberg.

<http://www.steinberg.net/>

UR22mkII

Yamaha

Cubase ()

Steinberg USB Driver

Cubase

1.

Cubase

1.

Cubase.

2.

Cubase.

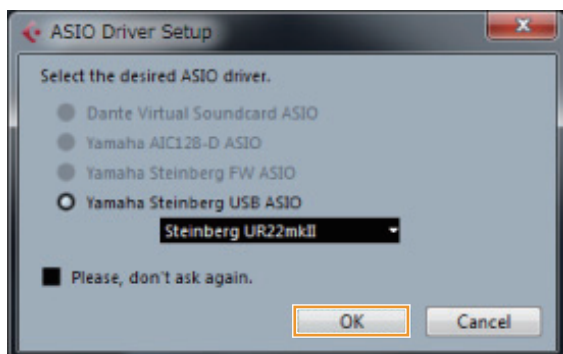
2.

(), [Create] ([Recording]).
[Clean
E-Guitar + Vocal] ().

3.

Cubase
[ASIO Driver Setup],

UR22mkII, [OK].



1.

• [Missing Ports] (UR22mkII),

[Mapped ports].

2.

DAW.

• [Map Always] (),
[OK].

3.

3.

[Devices] - [VST Connections]
[VST Connections].
Cubase

4.

ASIO (

UR22mkII.

Windows).

5.

ASIO

Mac.

Windows

Windows

ASIO

[Yamaha Steinberg USB ASIO].

Mac

UR22mkII

4. UR22mkII [Device Port]
Inputs () Outputs ().

Inputs

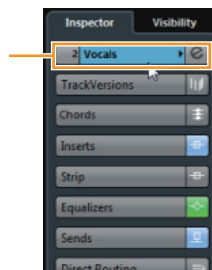
Bus Name	Speakers	Audio Device	Device Port
Stereo In 1	Stereo	Not Connected	Not Connected
Left			Not Connected
Right			Not Connected
Mono In 1	Mono	Yamaha Steinberg USB ASIO	UR22mkII Input 1
Mono			
Mono In 2	Mono	Yamaha Steinberg USB ASIO	UR22mkII Input 2
Mono			

Outputs

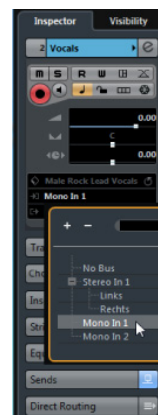
Bus Name	Speakers	Audio Device	Device Port
Stereo Out	Stereo	Yamaha Steinberg USB ASIO	UR22mkII Output 1/L UR22mkII Output 2/R
Left			
Right			

9.

[MIC/LINE 1]:



[Mono-In 1].



[MIC/LINE 2]:

5. [MIX]
[INPUT] [DAW].

6. [INPUT GAIN]

[MIC/LINE 1],

[INPUT 1 GAIN].
[MIC/LINE 2],
[INPUT 2 GAIN].

[PEAK]

7. [PHONES].

8. [Clean
E-Guitar] [Vocals]. [Clean

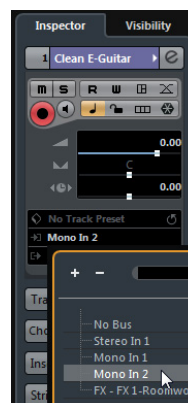
E-Guitar]

[Vocals].

[Clean



[Mono-In 2].



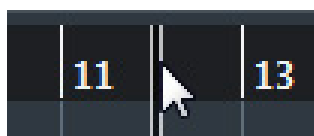
10. [●]



11. [■]



12. Ruler



13. [▶]



[HELP]

[OUTPUT].

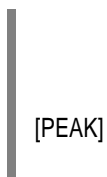
Cubase,

1.

DAW.

2.

[INPUT GAIN]



3.

[MIX]

[INPUT]

[DAW].

4.

[PHONES].

5.

6.

7.

UR22mkII MIDI

4.

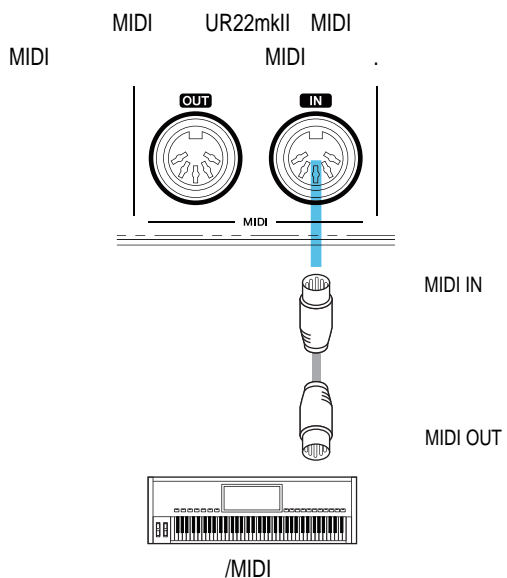
Cubase,

MIDI
HALion Sonic SE.

VST

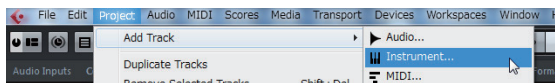
1.

UR22mkII.



2.

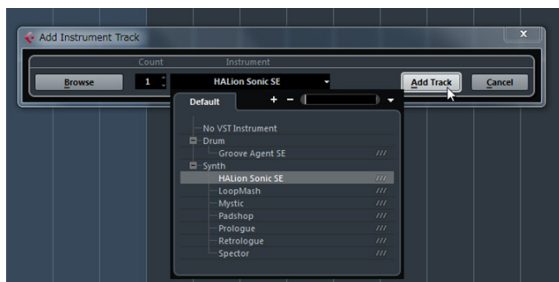
[Project] → [Add Track] → [Instrument...]



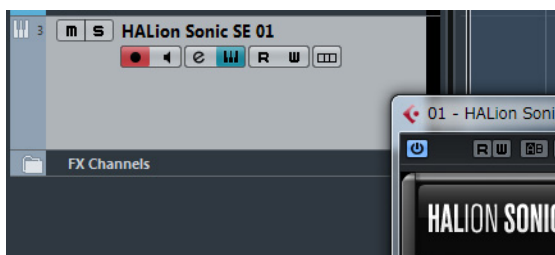
3.

HALion Sonic SE

[Add Track].

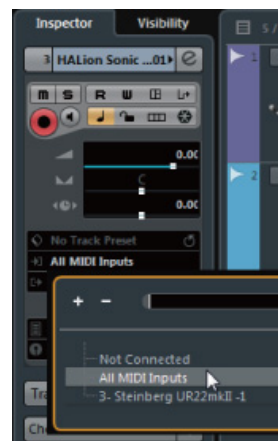


[Project] - [Add Track] - [Instrument . . .]



[All MIDI Inputs]

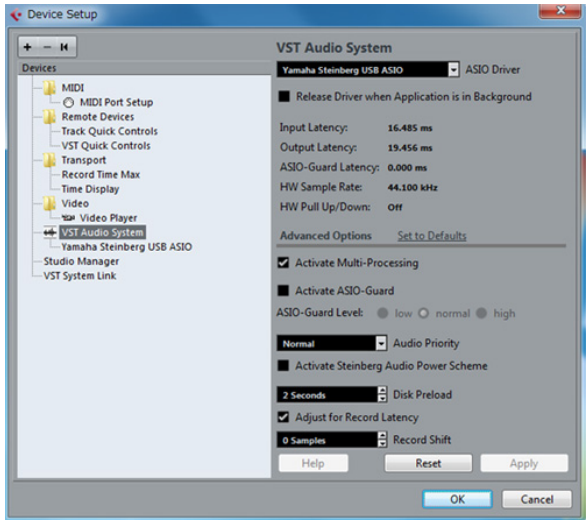
[Steinberg UR22mkII I-1].



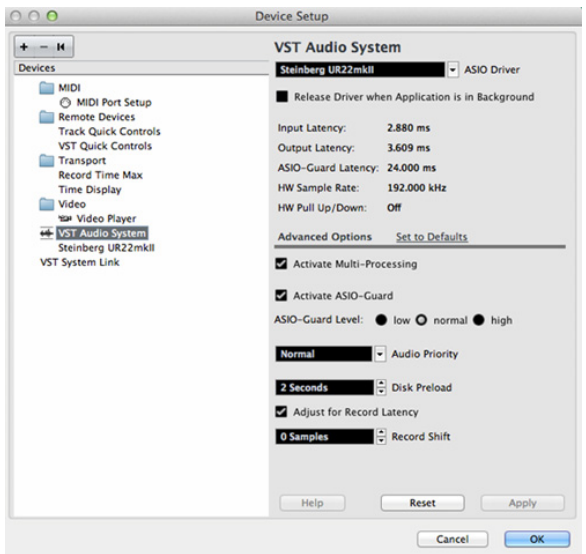
(USB UR22mkII)	USB Yamaha Steinberg USB Driver ? USB
	1. USB 2. (Windows) Audio MIDI Setup (Mac) Windows []-> [] [+] [>] " , ". Mac [Applications] -> [Utilities] -> [Audio MIDI Setup]. 3. USB USB USB 3 .
	USB USB USB 3 .
	[POWER SOURCE] ? USB, [USB2.0], [5V DC],
	USB Yamaha Steinberg USB Driver ? USB
	USB USB USB 3 .
	? [OUTPUT] [PHONES].
	" (11), ?
	" (12), ?

Cubase ASIO Cubase?
 [ASIO Driver] [Devices] -> [Device Setup...] -> [VST Audio System],
 [Steinberg UR22mkII] (Mac) [Yamaha Steinberg USB ASIO] (Windows)

Windows



Mac



(DAW),

?

" (.13) DAW.

?

?

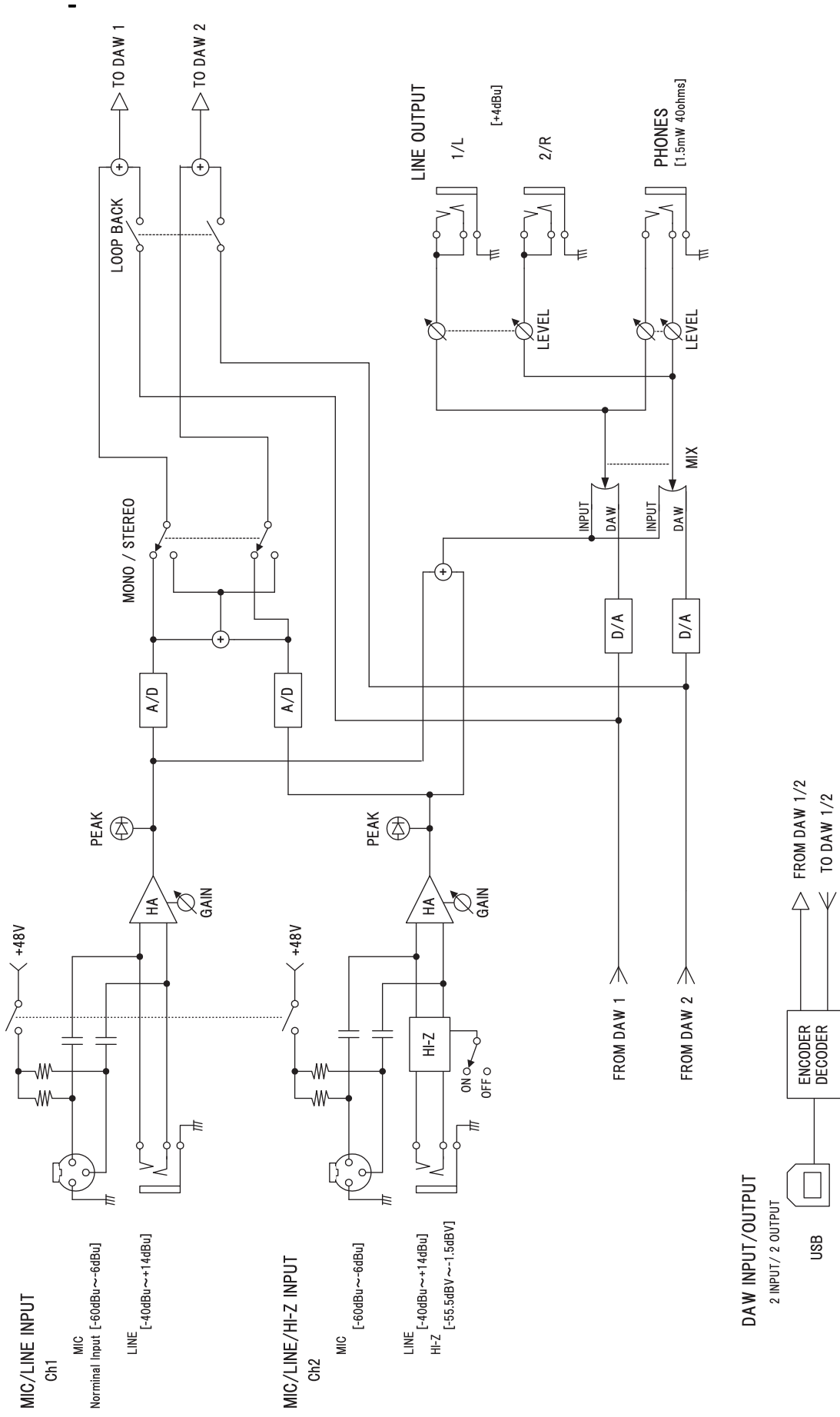
?

"Yamaha Steinberg USB Driver (Windows)" (.8)
 (Mac)" (.9).

(,)	Steinberg. http://www.steinberg.net/
	?
	XLR ?
	[MIX] [MIX] [DAW], ?
	loopback ? “ Steinberg UR22mkII (Windows)” (. 7) “ Steinberg UR22mkII(Mac)” (. 8).

Steinberg.

<http://www.steinberg.net/>



Steinberg Website
<http://www.steinberg.net/>

© 2015 Yamaha Corporation

Published 9/2015 MW-A0

